

## Product Line: CO<sub>2</sub> Booster Systems



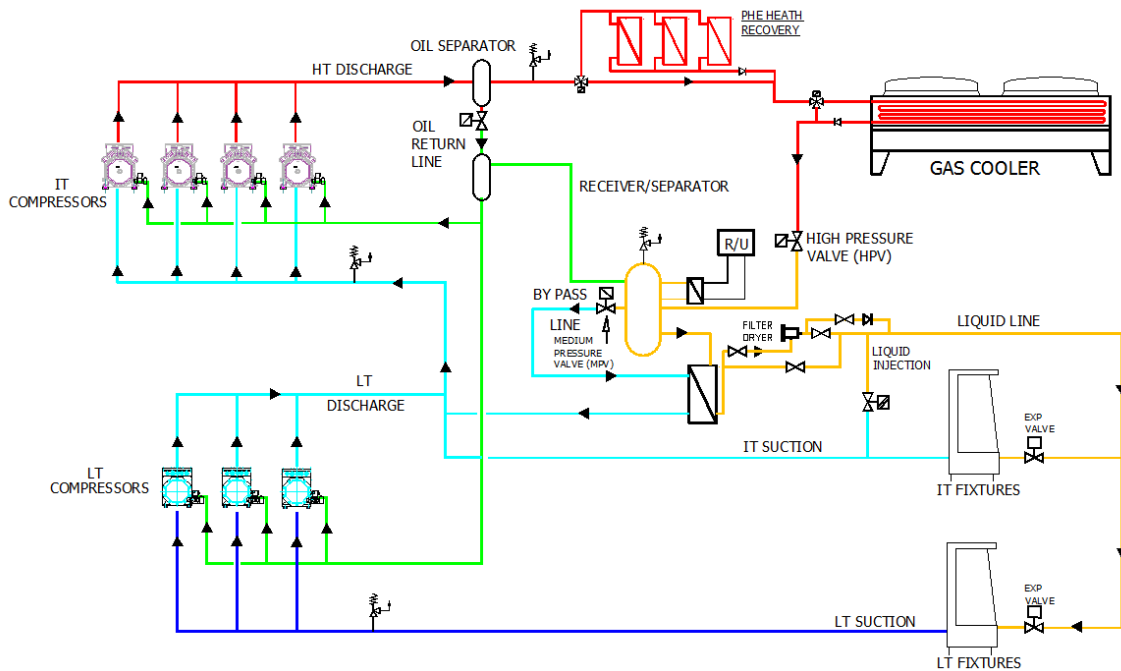
Leader in the CO<sub>2</sub> systems production with more than 1000 units running all over Europe and after 10 years of research and development, SCM FRIGO is able to provide customers with the largest range of booster applications.

Our mission is to deliver always the best solution ensuring reliability and energy efficiency at lowest operational costs.

We supply regularly the biggest players in the food industry using our competence and our experience to improve solutions.

## The System

The system is a two stage booster system for MT and LT operation with common refrigerant circuit. The unit include MT and LT compressors (Bitzer, Dorin, Copeland or GEA-Bock), inverter on the MT leading compressor, oil management with oil separator and stand alone oil lever regulator on each compressors, remote or integrated gas cooler, High pressure and receiver valve, liquid-flash heat exchanger, liquid injection. The liquid receiver is designed for 60 bar design pressure. Management of compressors, gas cooler and valves with electronic controller Danfoss, Carel and soon RDM. The system can include the following options: inverter on LT leading compressors, Total Heat Recovery, Back-up System for compressors and valves, Increased Receiver design pressure, walk-in noise insulated box.



## Range and configuration

The booster range cover a capacity up to 200 kW Medium Temperature and 50 kW Low Temperature. Available also "LT only" and "MT only (chillers)" configuration.

### Walk-in box

The booster unit can be placed in a noise insulated and self supported walk-in box. All management and service can be made from the inside.

### Plug 'n Cool Unit (PNC)

The "Plug'n Cool" is a "reach in" CO2 booster unit range with up to 4 medium-temperature compressors and 2 or 3 low-temperature compressors. The unit includes an integrated gas cooler equipped with EC fans with a capacity up to 500 kW  
Key benefits:

- Easy installation (customer only needs to connect the pipes to store)
- High Pressure piping already installed and tested
- Small footprint, ideal choice for **CONVENIENCE** stores
- High efficiency gas cooler due to EC fan technology

